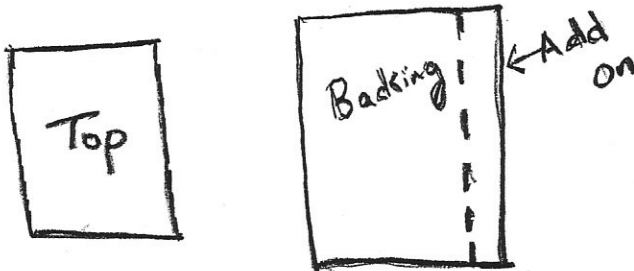
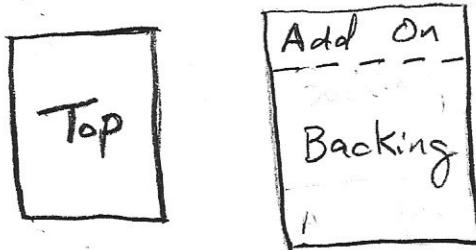


CENTERING BACKING PIECES

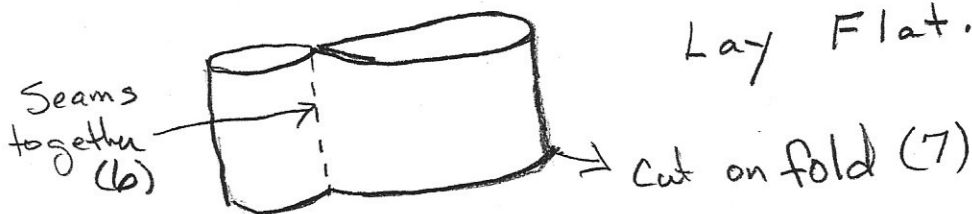
1. Place top on flat surface. Lay backing fabric on top and trim to fit.
2. If backing is not wide enough, find fabric large enough to make backing the correct size. Measure size needed and be sure to include seam allowances and at least 2" on all sides larger than top. Stitch fabric to long side of backing.



3. If backing is too short, add fabric to top/bottom – measuring with seam allowance and extra 2" all around as in instruction #2. Stitch extra fabric to top of backing.



4. If adding to width, take added fabric and stitch to other long side forming a tube.
5. If adding to length, take added fabric and stitch to bottom forming a tube.



6. Fold fabric so seams are together at a) top & bottom or b) left & right side.
7. Cut largest piece in half. This centers added fabric.

In memory of Kitty Lynch who taught this technique to me at Community Quilts.

Any questions, call me. Marty Lensink 925-1872